



THE

HEISEY HERALD

THE NATIONAL CAPITAL HEISEY COLLECTORS CLUB



Volume XXXII, No. 6

Washington, D.C.


March, 2004

Heisey Candy Jars, the Early Years


by David Warren and John Martinez

 **Confectioners' Glassware** 

**Should Be of as High Grade
as the Confections Displayed**



No. 367 CANDY JAR
No. 368 - 4 lb. CANDY JAR - Also Made 1 - 2 - 3 lb. Sizes
No. 369 - 4 lb. CRUSHED FRUIT - Also Made 1 - 2 - 3 lb. Sizes

DIAMOND  GLASSWARE

Is Unexcelled for Durability and Brilliancy
Write for Catalogue 54
A. H. HEISEY & CO., Inc.
Newark, Ohio

New York Office, 25 West Broadway
Philadelphia Office, Drexel Bldg., 11th and Market Streets
Chicago Office, 510 Hayworth Bldg., 42 Madison Street
Baltimore Office, 122 West Baltimore Street
Boston Office, 144 Congress Street

Confectioners Journal, February 1910

today because they were marketed and sold for commercial use, and were less likely to have been saved. Most of the large candy jars were discontinued before the 1926 Heisey Catalogue No. 109, with the 465 Recessed Panel jars being the only ones left in production.

The 341 Puritan pattern (*page 5, top panel*) was produced from 1902 through 1929, and many items in the pattern were later resurrected into the 341 Old Williamsburg pattern. The candy jars were added to the pattern around 1910, and are found in the 1, 2, 3, and 5 lb. sizes. The 341 Pickle Jar also doubled as the 1/2 lb. Candy Jar. The 341 Footed Table Sugar is often confused for a 1/2 lb. Candy Jar. The top panel on *page 5* also shows the 331 Lozenge Jar, which is better known as a Straw Jar. Heisey never missed an opportunity to sell glass, if you needed it, they made it!

The 352 Flat Panel pattern (*page 5, bottom panel*) was produced from 1904 through 1929. The 2 and 4 lb. jars started out as Crushed Fruit Jars designed by Clyde S. Whipple, and patented July 21, 1908. By changing the cover, Heisey was able to make two or more items from one mold. Once again, the Pickle Jar doubles as the 1/2 lb. Candy Jar. The 1, 2, and 4 lb. jars were also sold as Cracker Jars.



The candy jar was very popular from the early 1900's through the early 1930's, especially in your local general store and soda fountain. Though candy jars didn't appear in the Heisey catalogues until around 1913, they did turn up in ads, like the one above, starting around 1908. A December ad in the 1909 *Confectioners Journal* reminded proprietors "First impressions win or lose customers... The graceful designs and brilliant finish of Diamond H glassware make it a necessity to the soda dispenser or the confectioner who desires to attain best results." Many of the early Heisey candy jars are difficult to find



The 433 Greek Key pattern (*page 5, bottom panel*) was originally called Grecian Border and was produced from 1911 through the late 1920's. The 2 and 4 lb. jars also served double duty as Crushed fruit jars, and the Pickle Jar was also the 1/2 lb. Candy.

Continued on next page

Continued from page 1

The 1 lb. Candy without a lid sold as a Large Spoon, and the 1/2 lb. without lid was sold as a Small Spoon. Notice, the 433 jars share the same tops with the 352 Flat Panel, and the 352 and 360 Colonial Jars.

On page 144 of Neila and Tom Bredehoft's book *Heisey Glass 1896-1957*, they show an advertisement with the Nos. 807 and 803 Candy Jars. The ad is for "Heisey's Glassware for the Fountain" and says to write for Catalogue No. 58. Was this a special catalogue for the Soda and Confections trade? If so, it would explain the numbering on the following items. Each item had it's own number, so the customer would not have to distinguish between Crushed Fruit or Candy, and size when ordering.



No. 352 Vase
No. 1 Perforated Cover
Cut Top

No. 354
No. 3 Fern Dish with
Silver Plated Liner

No. 355 Colonial
Crushed Fruit Jar
1 Quart

No. 357 Colonial
Crushed Fruit Jar
3 Pints

The 359, 352, and 360 Candy Jars (*page 6, top panel*) started out as completely different items. The 359 Candy is the 352 Flat Panel Vase with no perforations in the lid. To make the 360 Candy, or the 357 Crushed Fruit, they just used the lids from the corresponding 352 Flat Panel items. The 352 Colonial 2 lb. Candy uses the 354 Wide Flat Panel No. 3 Fern Dish, and the 352 Flat Panel lid. Switch lids and you have the No. 355 Crushed Fruit Jar. (see above)

The 803, 804, 805, 806, and 807 candies (*page 6, bottom panel*) were first shown in Heisey Catalogue No. 76, dated 1915. These jars all have a striking resemblance to the 393 Narrow Flute pattern. With the Crushed Fruit lid, the pattern numbers change to 602 for the tall jars, and 602-1/2 for the short jars.

The No. 803 Convex Circle (*page 6, bottom panel*) Candy Jar is part of the 461 pattern designed by A. J. Sanford around 1913. In the *Heisey Glass Newscaster Autumn 1978*, Mr. Vogel shows a page from a British Catalogue



displaying items from the 461 pattern under the name Prismatic. This was probably the long lost name for the 461 pattern, and Mr. Vogel encouraged everyone to call it Prismatic after this discovery.

The 465 Recessed Panel pattern (*page 7, top panel*) was made from 1915 through 1933. The 1/2 lb. candy can be found in Moongleem and Canary, and both colors are quite rare. Candy Jars in this pattern share the same finial with the 1183 Revere, and 353 Medium Flat Panel jars. There are 6 different sizes ranging from 1/4 to 8 lbs. The 8 pounder was the largest candy jar Heisey ever made. The 1/4, 1/2, and 1 lb. jars are fairly easy to find, but since the 3, 5, and 8 lb. jars were marketed to the commercial sector, few are still in existence. The bottom of the 1/4 lb. jar also had a stuck handle applied to the side, and spout worked into the rim, to form a creamer. This was coupled with a normal 1/4 lb. jar and lid to form the 465 Cream and Sugar. Sizes for this pattern are: 7-1/2" for the 1/4 lb., 9" for the 1/2 lb., 10-3/8" for the 1lb., 13" for the 3 lb., 15-1/2" for the 5 lb., and 18-1/4" for the 8 lb. Candy Jar. These items were all hand made, so the measurements are all approximate, and they also apply to the 1183, and 353 jars. The 465 jars can be found with a variety of decorations, mostly done by companies other than Heisey. There are applied gold decorations, enamel paintings, frostings, etchings, cuttings and engravings, and ruby and cranberry stains, to name a few.

The 469 Reverse Hartman 1/2 lb. Candy Jar (*page 7, bottom panel*) was made from 1907 through 1925, and is the only item in this pattern. (*No, there is no Goblet or Spooner in this pattern, you were sold the candy without a lid. This goes for the 465, 1183, and 353 jars also, regardless of what they say on ebay!*) These jars are often found with non-Heisey cuttings.

The 1183 Revere pattern (*page 7, bottom panel*) was produced from 1914 through 1928. The Candy Jars were designed by A. J. Sanford, and patented March 8, 1921. The Candy Box was made in three sizes: 6", 7", and 8", and are the same as the 1184 Yeoman Candy Boxes. Both the Candy Jars and Boxes were used for a variety of Heisey cuttings and etchings, with the No. 679 Windsor, and No. 693 Cloister cuttings being favorites with collectors today. For the most part, the decorations found on the Revere candies were done by companies other

Continued on next page

MARCH MEETING

Monday, March 8 - 7:00 P.M.
Potomac Community Library
10101 Glenolden Drive
Potomac, MD

.....
PROGRAM

Heisey Candy Jars (1920-1957)

By David Warren

Please bring Examples
Whatzits & Finds/Fakes

Continued from page 2

than Heisey. The 3 and 5 lb. jars are the hardest to find, and are rarely decorated.

The 1184 and 1185 Yeoman pattern (*page 8, top panel*) was made from 1913 through 1957, though these two candies were probably produced sometime before 1920 through 1925. Both candies are seldom seen, with the 1184, 1/4 lb. jar being quite rare. (*The only one I have ever seen is in the HCA Museum.*) We will talk about the 1184 Yeoman Candy Boxes in the next article.

The 353 Medium Flat Panel pattern (*page 8, top panel*) was produced from 1905 through 1929. The first time the Candy Jars appeared in a Heisey catalogue was in 1924, so they were probably introduced around the same time as the Revere Jars, 1921. These jars are some of the hardest to find. There is a "Kissin' Cousin" to them that is almost identical except for how the foot attaches to the bottom of the jar. The Heisey jars are usually marked, so buyer beware! An interesting item is the Confection Set. It was created by adding the 1/2 lb. Candy Jar to the Spice Tray. Since the Spice Tray had been in production long before the Candy Jar, it must have been a happy coincidence that it fit into the tray.

The 473 Narrow Flute with Rim pattern (*page 8, bottom right*) was produced from 1916 through the mid 1920's. The 6" footed bowl has the same basic shape as its 1185 Yeoman counterpart, and was probably produced around the same time, 1920 or so. Since no catalogue pictures can be found for this

Continued on next page

Message from the Prez

March is finally here, and you know what that means. The All Heisey Show and Sale is only days away. I can hardly wait! Dealer's, you know what I'm looking for, so go out and find me that Winged Scroll Custard Cup, I don't care what color it is.

Sadly, the Willey's and Jay Martin will not be able to attend this year's show, but we hope and expect to see them next year. The Morrow's from IL. and Pat Givens from MA. will be filling in for them.

After 32 years, one of our founding dealers, the Schamel's (Diamond-H Plus) will be retiring after the show. George and Eileen have been prominent members of the National Capital Heisey Collectors Club and HCA, so drop by their booth and let them know we'll miss them. We still expect to see them at our club meetings!

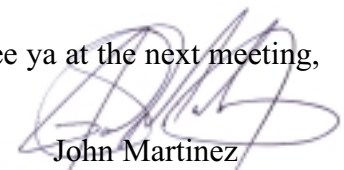
On the brighter side, everything is going along on schedule with the show preparations, and Sheri Warren still has openings for people who want to work the show. Let us know if you can help out.

At the last meeting, the club decided to donate a Center Piece and a Box for the Blind Auction for this year's HCA Convention. If you have any ideas for the Center Piece, or suggestions for the Auction Box, talk to Bryan Baker.

David Warren's program on Heisey Candy Jars, the Early Years, was a roaring success. He will be following it up at the next meeting with a program on Candy Jars from 1920-1957. If it had a lid, and could be used for candy, bring it to the meeting.

Welcome to Patricia Ann Murphy of Laurel, MD. She joined the club in January, but has yet to attend a meeting. If you can't make it to one of our meetings, please introduce yourself to us at the show. We would all love to meet you.

See ya at the next meeting,



John Martinez

Membership News

Due to rising cost of producing the newsletter, and other expenses, the club will be raising our membership fee to \$7.00 Single, and \$10.00 Family or Household. These rates go into effect for March.

Continued from page 3

item, it must not have sold well, and was discontinued before they could add it to a catalogue.

The 4291 Marlene Candy Jar (page 8, bottom left) was produced from 1919 through 1929, according to Neila Bredefhoft's book, *Heisey Glass 1896-1957*. Like the other items displayed, the Marlene Candy Jar was blown glass and extremely fragile. Only the 4291 jar, and the 3947 had pressed stems, and were marked. The only way to tell if the other items in that panel are Heisey, is if they have a Heisey cutting or etching.

For the most part, all of the candy jars and boxes are marked, and were discontinued before 1926. They are all found in Crystal, except for the 465 1/2 lb. jar, which is rarely found in Moongleem and Canary. Any Jar over 3 lbs. is considered a real find, and it is probably best to write down the measurements of each size, so you can distinguish between them, unless you use Carl Sparacio's method, and carry around multiple 1/2 lb. bags of jelly beans.

The National Capital Heisey Study Club with
The National Capital Heisey Collector's Club
Present the **Thirtysecond Annual**
All-Heisey Glass Show

Bohrer Park Activity Center
506 S. Frederick Ave. Admission \$6.00
Gaithersburg, MD (With Ad \$5.00)

**All Proceeds to Benefit
The Heisey Museum**

Sat., March 20, 2004 Sun., March 21, 2004
10am to 5pm 11am to 4pm
Check us out at: www.capitalheiseyclub.org

From I-270 use Exit 9A
Take 355 North Exit
(Town Center)
Turn Left at 3rd Stop Light
(Education Blvd)

For More Information Call:
(301) 432-6285

Dealers Directory

Your Ad Here

Contact Mrs. Chris Maskaleris at
(410) 798-5527 for details

Buy-Sell Appraisal Service

FOREVER HEISEY
Jan and Norm Thran
Specializing in Heisey

1663 Londondale Parkway (740) 344-5955
Newark, Ohio 43055 jathra@communigate.net

HEISEY ONLY BY MAIL OR APPOINTMENT

MOSTLY HEISEY
Rhoda & David Curley
CALL TOLL FREE 1(800) 972-2775

16 Clayton Place (518) 482-6272
Albany, N.Y. 12209



Moundbuilders Antiques
The Second Generation
Barbara and Richard Bartlett

(904) 631-9773
or
1-888-434-7397 (Toll Free) P.O. Box 1931
E-MAIL: clasyglas2@aol.com Ponte Vedra Beach, FL 32004

Just Minutes off Interstate 95, Exit 329

Heisey Exclusively Mail Order, Shows, Display

**PIECE BY PIECE
ANTIQUES**



Falls Church, Virginia 22042
Phone/Fax: (703) 250-6117
Email: piecebypiece@cox.rr.com

*Specializing in
Heisey Glassware*



Bryan K. Baker
Member HCA
Buy & Sell



Diamond H Plus

George & Eileen Schamel

6625 Gilardi Road
Boonsboro, MD 21713

Appointment or Mail Order
(301) 432-6285
ersquilter@webtv.net

THE WOODEN SHOE

Antiques & Collectables
Buy & Sell
Glass, Furniture, Estates



Jim & Sheri Van Es
Herndon, VA

By Appointment
(703) 435-9045

PATTON HOUSE ANTIQUES

Specializing in Glass
Heisey • Cambridge • Fostoria • Duncan

Factory Antique Mall

Verona, Virginia off I-81, Exit 227

Antiquers Mall, Booth 81

Route 29 North, Charlottesville, Virginia

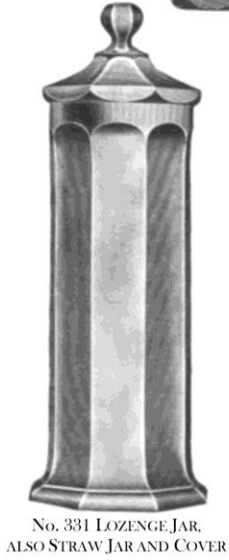
The Daniel's, Box 547 Louisa, VA 23093 (540) 967-1181

REGISTERED
TRADE MARK
No. 50121

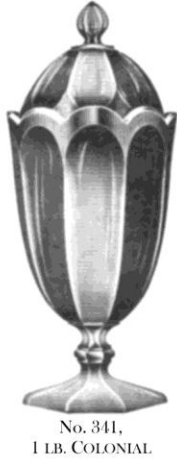
CANDYJARS

REGISTERED
TRADE MARK
No. 50121

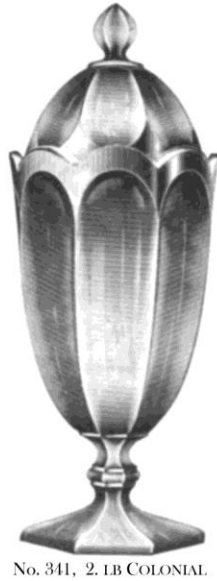
No. 341
1/2 LB. COLONIAL
GROUND BOTTOM.
ALSO PICKLE JAR



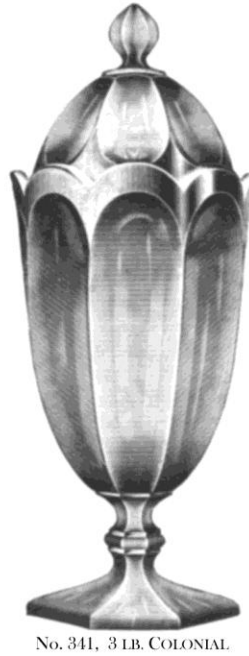
No. 331 LOZENG JAR,
ALSO STRAW JAR AND COVER



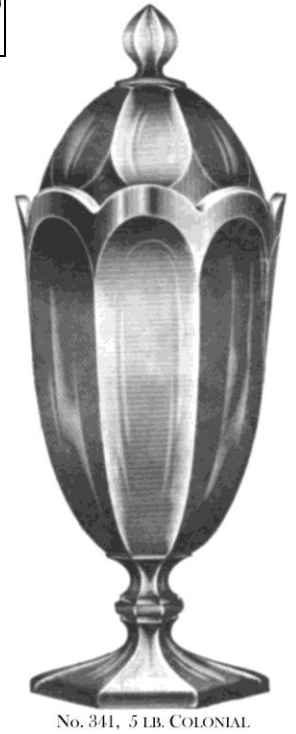
No. 341,
1 LB. COLONIAL



No. 341, 2 LB. COLONIAL



No. 341, 3 LB. COLONIAL



No. 341, 5 LB. COLONIAL

Catalogue No. 75, 1913

REGISTERED
TRADE MARK
No. 50121

CANDYJARS

REGISTERED
TRADE MARK
No. 50121



No. 352, 1/2 LB.
PATENT No. 39432
ALSO PICKLE JAR



No. 352, 1 LB.
PATENT No. 39432



No. 352, 2 LB. COLONIAL
PATENT No. 39432



No. 352, 4 LB. COLONIAL
PATENT No. 39432

No. 433, 1 LB.
PATENT No. 40837



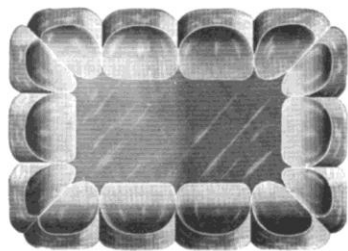
No. 433, 1/2 LB.
PATENT No. 40837
ALSO PICKLE JAR



No. 433, 4 LB.
PATENT No. 40837



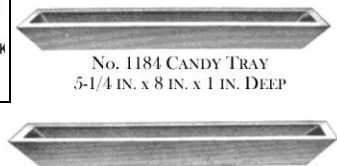
No. 433, 2 LB.
PATENT No. 40837



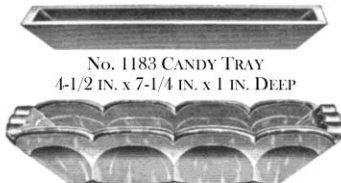
No. 353 COLONIAL OBLONG
CANDY PLATE, 5-1/2 IN. x 8 IN.



**CANDYJARS
AND TRAYS**



No. 1184 CANDY TRAY
5-1/4 IN. x 8 IN. x 1 IN. DEEP



No. 1183 CANDY TRAY
4-1/2 IN. x 7-1/4 IN. x 1 IN. DEEP

No. 352 COLONIAL CANDY TRAY
5-1/2 IN. x 8 IN.



No. 360, 3 LB. COLONIAL CANDY JAR
ALSO No. 356, THREE PINT CRUSHED FRUIT

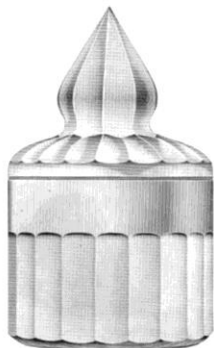


No. 359, 3 LB. COLONIAL CANDY JAR
ALSO CRACKER JAR, GROUND TOP



No. 352, 2 LB. COLONIAL CANDY JAR
ALSO No. 354, ONE QUART CRUSHED FRUIT

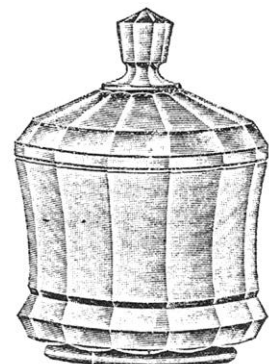
Catalogue No. 75, 1913



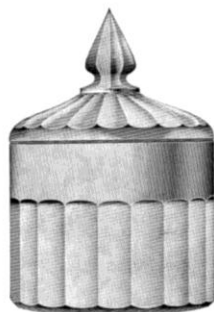
No. 602-1/2 CRUSHED FRUIT
24 oz., PATENT No. 46870



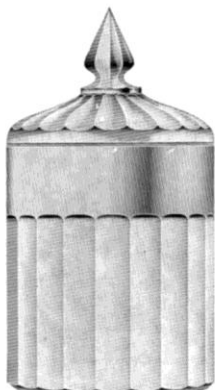
**CANDY OR
CRACKERJARS**



No. 803, 3 LB. CANDY JAR
OR No. 461 BISCUIT JAR



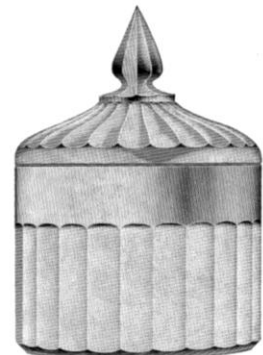
No. 806, 1-1/2 LB. CANDY
OR CRACKER JAR



No. 804, 2 LB. CANDY
OR CRACKER JAR



No. 805, 4 LB. CANDY
OR CRACKER JAR



No. 807, 3 LB. CANDY
OR CRACKER JAR



CANDYJARS
No. 465

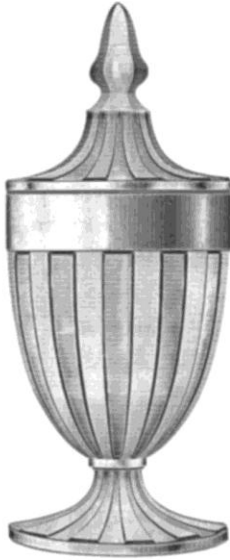


1/4 LB., ALSO 1/2 LB.



Lewis & Neblett Co.
Engraving (1917-1918)

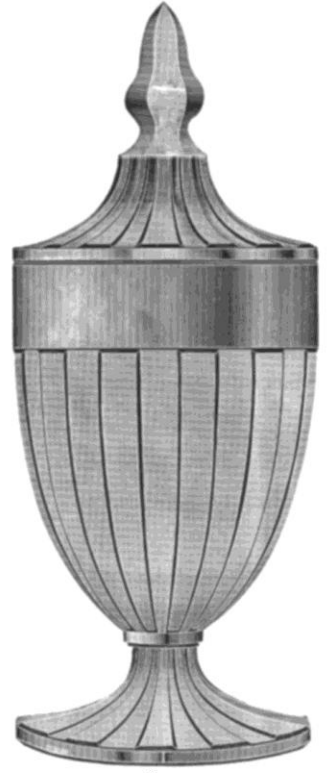
1 LB.



3 LB.



5 LB.



8 LB.

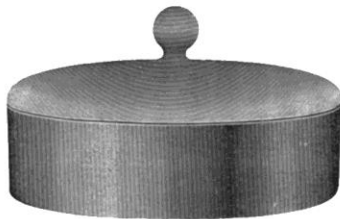
Catalogue No. 102, 1924



CANDYJARS



No. 469, 1/2 LB.



No. 1183, 8 IN. CANDY BOX AND COVER
ALSO MAKE 6 IN. AND 7 IN.



No. 1183, 1/4 LB.



No. 1183, 1/2 LB.
#679 WINDSOR CUT



No. 1183, 1 LB.
#693 CLOISTER CUT



No. 1183, 3 LB.



No. 1183, 5 LB.

 **CANDYJARS**



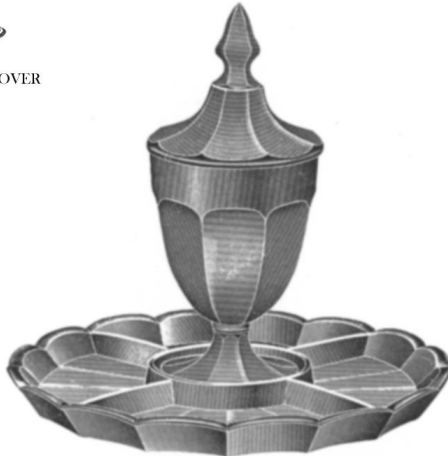
No. 1185, 6 IN.
FOOTED BOWL AND COVER



No. 353, 1/2 LB.



No. 1184, 1/4 LB.



No. 353 CONFECTION SET



No. 353, 1 LB.



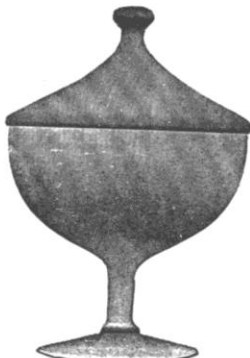
No. 353, 3 LB.

Catalogue No. 102, 1924

Circa 1916



No. 3800, 5 IN.
WITH COVER



No. 3801, 5 IN.
WITH COVER



No. 4291, CANDY JAR
WITH No. 431 VICTORY ETCH



No. 473, 6 IN. FOOTED BOWL AND COVER



No. 3947, 4 IN.
WITH COVER



No. 3946, 6 IN.
NAPPY AND COVER



No. 3949, 4 IN.
MINT AND COVER