



THE

# HEISEY HERALD

THE NATIONAL CAPITAL HEISEY COLLECTORS CLUB

Volume XXXII, No. 7

Washington, D.C.


April, 2004

## Heisey Candy Jars, the Later Years

by David Warren and John Martinez



"Made By HEISEY"

Thousands of women, thrice daily pay tribute to the fascination and unusual wearing qualities of Heisey's  Glassware, by using it in their homes. You, too, will take pride and save money by its use.

At the better stores of wares

A. H. HEISEY & CO.  
DEPT. N-1 NEWARK, OHIO



*National Geographic, September 1924*

Before we start in on the candy jars after 1920, we have a little house keeping from last month's article. I was informed by one of our dealers at the All Heisey Show, that he has a No. 473 Narrow Flute with Rim candy in Canary. He said if he had one, there must be more of them out there. Good luck finding one! Also at the show, we discovered a candy not shown in the Heisey catalogs. It is the same as the No. 3947

4" Comport with Cover, except this one is 6". It was also sporting Heisey's Windsor cut. The comport is marked twice on the stem, and has a blown bowl and cover.



Now on with the later candies. We had quite an impressive display for the program, including a few very rare items.

The 3350 Wabash pattern was produced from 1922 through 1947, though the 6" Comport and Cover was probably discontinued before 1930. The pattern was made plain and with wide optic, and can be found in Crystal, Flamingo, Hawthorn, Crystal foot and stem with Marigold bowl, and Moongleam foot and stem with Crystal bowl. The Comport has been found in Crystal, Flamingo and Hawthorn, and was used for Heisey etches, most notably Frontenac, and cuttings like Windsor (add on left). The Comport was marked on the stem, and because the bowl and cover are blown glass, many have been damaged and discarded over the years, making it hard to find.

The 417 Tudor pattern was produced from 1923 through 1937, but the Oval Candy Box doesn't appear in any of the Heisey catalogs after 1926. The pattern is sometimes called Wagon Wheel, and Mr. Vogel called it Rib and Panel until the original Heisey name was discovered. The pattern can be found in a variety of colors, but the Candy Box has only been found in Crystal.

The 1170 Pleat and Panel pattern was produced from 1925 through 1937, and named by Mr. Vogel. Both the Low Footed 6" Comport and

*Continued on next page*

*Continued from page 1*

Cover, and the High Footed 5" Comport and Cover can be found in Crystal, Flamingo, and Moongleam.

The 1184 Yeoman Candy Boxes are the same as the 1183 Revere Boxes, with the exception being the 6" Deep Box with Diamond Optic. While the Revere boxes are only found in Crystal, the Yeoman boxes have been found in Flamingo, Moongleam, Sahara, and Alexandrite. Many of these boxes are found with non-Heisey decorations.

The 1253 Twist 3 Cornered Mint and Cover was produced from 1928 through 1937, and Mr. Vogel is credited with naming the pattern. The Mint can be found in Crystal, Moongleam, Flamingo, Marigold, and Sahara. Though the Crystal mint and cover are the hardest to find, they are the most affordable.

The 1401 Empress 6" Candy Box and Cover was produced from 1930 through 1938, and is usually marked on the back of one of the dolphin feet. It was made in Crystal, Flamingo, Moongleam, Sahara, Alexandrite, Tangerine, and Cobalt. Early ads refer to this pattern as Fleur de Lis, or Lilies of France.

The 1405 Ipswich pattern was produced from 1931 through 1946. The Sandwich Glass pattern Comet was the inspiration for this pattern, and Heisey's earliest ads called it Early American Sandwich, but soon changed the name to Ipswich. The 1/4 lb. Candy Jar is the same as the Water Goblet without the cover, and was made in Crystal only. The 1/2 lb. Candy Jar and Cover was made in Crystal, Sahara, Flamingo, and Moongleam. The 1/2 lb. Candy was reproduced by Imperial in Amber (1960 - 69), Heather (1961 - 65), Verde (1961 - 67), Antique Blue (1966), and Milk Glass sometime before 1968. Imperial made the 1/4 lb. Candy using the lid from a Cambridge footed tumbler in Mandarin Gold, which is similar to Heisey's Sahara color, and Moonlight Blue, which is similar to Heisey's Experimental Blue color (1962 - 65).



The 1430 Aristocrat Candy Jars were produced from 1933 through 1937. The Short jar is 10-3/4" high, and the Tall jar is 13" high. There are two styles of lids (plain and beaded top), and the ball on

the stem is similar to the 3404 Spanish stemware. Both jars are usually marked, and were produced in Crystal, Moongleam, Sahara, Cobalt, and very rarely in Tangerine. These are one of the most prized finds for the Heisey collector, in any color.

The 1469 Ridgeleigh pattern was produced from 1935 through 1944, though it is doubtful the 6" Comport and Cover was produced much after 1940. It is seldom if ever marked, and can often be had at a bargain price from an unknowing dealer.

The 1483 Stanhope pattern was produced from 1936 through 1941. The pattern was designed by Walter Von Nessen, named after the Stanhope Diamond, and had Bakelite (plastic) buttons that screwed into the handle. The 6" Candy Box is probably not marked, and found with Heisey's Maytime, Frosty Dawn, and Swingtime etches. This is an extremely hard candy box to find.

The 1489 Puritan pattern was produced from 1937 through 1957, though the 1/2 and 1 lb. Candy Boxes did not appear until the early 1940's, and were discontinued before 1950. Both candies were made in Crystal only, and neither one was marked. Both of the Puritan Candy Boxes are hard to find, but because they are not marked may be found at a reasonable price.

The 1503 Crystolite pattern was produced from 1938 through 1957. There are four candies in the pattern. Both the 7" Candy Box and the 7" 3 Compartment Candy Box look the same with the cover on. Viola Cudd shows the bottom of the 7" Candy Box in the Dawn color, on page 109 of her book *Heisey Glassware*. Imperial Glass also made the 7" Candy Box and Cover in crystal, from 1957 to 1962, and these boxes may also be marked. The Crystolite 7" boxes can also be found with a variety of metal lids with glass finials. These were done by a number of companies, and a few examples can be



*Cambridge Shell Candy Box*

seen on the bottom of page 8. The 6" Candy Box and Cover is probably the hardest of the Crystolite boxes to find, and is marked. The 5-1/2" Shell Candy Box and Cover is sometimes

*Continued on next page*

**APRIL MEETING**

Monday, April 12 - 7:00 P.M.  
Potomac Community Library  
10101 Glenolden Drive  
Potomac, MD

.....  
**PROGRAM**

**Review of and Finds from the  
32nd Annual All Heisey Show**

Please bring Examples  
Whatzits & Finds/Fakes

*Continued from page 2*

marked, and was sold as a Mayonnaise without the cover. Cambridge Glass also made a Shell Candy Box, but the finial on the cover is nothing like the Heisey Shell Candy.

The 1504 Regency pattern was produced from 1941 through 1957, though the candy was probably discontinued before 1950. The pattern is sometimes called Wheat, and is closely associated with the Crystolite pattern. The 7" Candy Box and Cover are marked, and hard to find.

The 7004 Wreath 6" Candy Box was produced in the early 1940's and discontinued a short time later. No pictures or descriptions of it appear in any Heisey catalog. This is a single piece pattern, and Mr. Vogel assigned it both name and pattern number. Both the Wreath and Regency Candy Boxes can be found with metal lids, but they are much more valuable with their original glass lids. The Wreath box is very difficult to find, so keep your eyes open.

The 1506 Whirlpool pattern was produced from 1938 through 1957. The pattern name was later changed to Provincial, but either name is acceptable. The 5-1/2" Footed Candy Box is marked on the stem, just below the bowl, and was made in crystal and zircon. Imperial reissued the Footed Candy Box in Crystal (1957 - 65), Verde (1969 - 74), Amberglo and Azalea (1969 - 72). Like the Ipswich pattern, Imperial put the same Cambridge lid on a Provincial Water Goblet to form a Candy Jar. These can be found in Crystal, Amber, Verde (1961 - 71), and

*Continued on next page*

**Message from the Prez**

Please forgive me if you are getting this newsletter late. Things have been pretty hectic on my end since the 32nd Annual All Heisey Show and Sale. There were a few issues the dealers brought up for the next show, and we are working to address them.

First off, thanks to all of our dealers, who brought more glass this year than I have seen in a long time. Attendance was down a bit from last year, but the people who came didn't seem to mind the Karate tournament going on next door, or the lack of parking in front of the community center. One lady who came to see her child at the tournament, ended up spending \$2,000.00 in one of our booths. She had never even heard of Heisey Glass before that day!

If you haven't already heard, Harold Willey passed away a week before the show. It was strange not seeing the Willey's or the Sparacio's at the show, and many of our customers were asking about them. Our thoughts are with you Mildred. Carl, get better so we can see you and Helen at next years show.

Even though he blames me for running them out of the show, it will be sad not to see George and Eileen Schamel set up next year. Enjoy your retirement!

The winner of this years door prize, a Crystolite Shell Candy Box and Cover, was Regina Driver of Port Republic, MD. Regina used to belong to the club a few years ago, and just reinstated at the show. Congratulations, and welcome back.

Also, welcome to Mary Beth Cahill and Steve Champlin of Washington, DC, and Scott Heron of Rochester, NY, who joined our club at the show. We hold our meetings on the second Monday of the month from September through May, at the Potomac Public Library. I'll understand if Scott doesn't come by, but we would love to meet Mary Beth and Steve.



See ya at the next meeting,

*(Handwritten signature)*  
John Martinez

**Membership News**

Due to rising cost of producing the newsletter, and other expenses, the club will be raising our membership fee to \$7.00 Single, and \$10.00 Family or Household. These rates go into effect for March 04.

*Continued from page 3*

Heather (1961 - 68). Imperial also reworked the Mayonnaise to accept the Footed Candy lid, forming a Candy Box, which is often mistaken as Heisey. A good rule with Whirlpool/Provincial is, if it's not marked, it's probably Imperial.

The 1519 Waverly pattern was produced from 1940 through 1957, and many of the items were designed by Horace King. When first introduced, the pattern was named Oceanic because of its plumes, waves and sea motifs, but was soon changed to Waverly. There are three different candies in the Waverly pattern and they can all be found with the Orchid and Heisey Rose etches, along with a multitude of decorations by other companies. The 6" Candy Box and Cover, Tall Footed was also produced in Honey Amber by Heisey, and these are quite rare. Imperial reproduced the footed candy in Crystal (1957 - 64), Carmel Slag (1966), Verde, Antique Blue, and Sunshine Yellow (1974). They also reproduced the 5" Chocolate Box and Cover in Carmel Slag (1972).

The 1521 Quilt pattern was produced around 1940 and discontinued soon after. It is a small pattern consisting of a Cigarette Box, Ashtray, and 7" Candy Box and Cover. The pattern was reworked to form the 1533 Wampum pattern. The Quilt pattern is often mistaken for the Wampum pattern, and both boxes are hard to find.

The 1533 Wampum pattern was produced from 1941 through 1944. The 7" Candy Box and Cover was reproduced by Imperial in Blue, Pink, Crystal Satin (1980), Blue Satin (1981), and are marked L/G.

The 5022 Graceful pattern was produced from 1940 through 1943, and is mostly a stem line. The 6" Candy Box has a pressed foot and stem which is probably marked, and a blown bowl and cover. It is similar in shape and size to the 3947 comport pictured on the front, and can be found with the Orchid etch. The Graceful candy is considered quite rare.

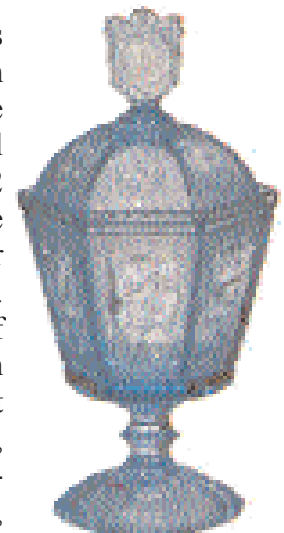
The 1540 Lariat pattern was produced from 1942 through 1957, and none of the candies were reproduced by Imperial. Horace King was the pattern designer, and Heisey first referred to it as Gordian Knot. Most of the candies are marked. This was Heisey's most prolific pattern for candies, with at least eight I was able to find. The Footed Candy Box

and Footed Urn Jar share the same cover. The 5" Candy Box without the lid is a Mayonnaise, and the lid was also used on the Footed Cheese. The 7" Carmel Box and 7" Candy Box share the same lids also. Most of the Lariat candies lie in the affordable range, but if you are ready to spend some money, look for the 8" Candy Box with a Plume Finial Cover or the Horse Head Cover. Both of them are rare, but the Horse Head Cover brings in the big bucks! All of the Lariat candies can be found with Heisey's Moonglo cutting, as well as decorations, such as etches, enamel, and cuttings from other companies.

The 1541 Athena pattern was produced from 1943 through 1948. None of the pattern was marked, and it was made exclusively for Montgomery Wards. Many pieces of the pattern were cut by Susquehanna Glass. The 8" Urn and 5-1/2" Candy Jar share the same cover, and the 5-1/2" Jar without the cover was sold as a Mayonnaise. Both of these candies are hard to come by, but may possibly be had at a reasonable price because they are not marked.

The 1567 Plantation pattern was produced from 1948 through 1957, and was designed by Horace King. Plantation is a favorite amongst collectors, and the candies are no exception. The Round Candy is better known as the Round Butter and Cover, and shares the same lid with the Short Footed 5" Comport, Deep and the Tall Footed 5" Candy Jar. The 7" Candy Box and Cover is the hardest to find of the Plantation candies, yet there were two of them at the recent All Heisey Glass Show. All of the Plantation candies were offered with the Plantation Ivy etch, and they are all usually marked.

The 1590 Zodiac pattern was produced from 1949 through 1955, and is another Horace King design. The panel designs are made up of the 12 signs of the Zodiac, and the figure on the finial of the cover is the Greek God, Zues. Imperial replaced the foot of the Candy Jar with the bottom of the cover, and reproduced it in Crystal, Verde (1969 - 74), Azure Blue Iridized (1969 - 71), Amberglo (1969 - 73),



*Continued on next page*

*Continued from page 4*

Antique Blue (1972), Peacock Carnival (1971 & 74), Rubigold (1972 & 74), White Carnival (1973 - 74), and Sunshine Yellow (1974).

The 1951 Cabochon pattern was produced from 1951 through 1957, and was also designed by Horace King. The 6-1/2" Candy Box and Cover was marked, and made in Crystal and Dawn. The Cabochon box can be found with the Orchid, Heisey Rose, and Plantation Ivy etches.

The 1626 Satellite and 1632 Lodestar patterns were produced from 1955 through 1957. They are both the same pattern, with the exception being Satellite was produced in Crystal, and Lodestar was produced in Dawn, both patterns were marked. The Satellite pattern was often decorated with Heisey's Matte finish on the star shaped base of the item,

while Lodestar was seldom decorated. Both Candy Boxes are hard to come by, but the Lodestar box will cost the most, being made in Dawn.

Last, but not least, is the V960A Verlys Rose Candy Box produced by Heisey from 1955 through 1957. Heisey made the Rose Candy in Crystal and Zircon. Both colors were then given the Matte finish. None of the Heisey Verlys was marked, so the only way you will know for certain it is Heisey, is if it is Zircon. This is another hard candy to find.

Those folks in Newark must have had a powerful sweet tooth, as is evidence by the last two articles. There are a few general rules when it comes to Heisey Candy Jars and Boxes. (1) If it's not marked, you may get a bargain. (2) If it's in color, be prepared to pay. (3) If it has it's original glass lid, what are you waiting for? Buy it!

## Dealers Directory

### Your Ad Here

Contact Mrs. Chris Maskaleris at  
(410) 798-5527 for details

Buy-Sell

Appraisal Service

**FOREVER HEISEY**  
Jan and Norm Thran  
Specializing in Heisey

1663 Londondale Parkway  
Newark, Ohio 43055

(740) 344-5955  
jathra@communicate.net

HEISEY ONLY

BY MAIL OR APPOINTMENT

**MOSTLY HEISEY**

Rhoda & David Curley  
CALL TOLL FREE 1(800) 972-2775

16 Clayton Place  
Albany, N.Y. 12209

(518) 482-6272



**Foundbuilders Antiques**  
**The Second Generation**  
Barbara and Richard Bartlett

(904) 631-9773

or  
1-888-434-7397 (Toll Free)  
E-MAIL: clasyglas2@aol.com

P.O. Box 1931  
Ponte Vedra Beach, FL 32004

Just Minutes off Interstate 95, Exit 329

Heisey Exclusively

Mail Order, Shows, Display

### Your Ad Here

Contact Mrs. Chris Maskaleris at  
(410) 798-5527 for details

**PIECE BY PIECE**  
**ANTIQUES**



Falls Church, Virginia 22042  
Phone/Fax: (703) 250-6117  
Email: piecebypiece@verizon.net

*Specializing in*  
*Heisey Glassware*



**Bryan K. Baker**  
Member HCA  
Buy & Sell

### THE WOODEN SHOE

Antiques & Collectables  
Buy & Sell  
Glass, Furniture, Estates



Jim & Sheri Van Es  
Herndon, VA

By Appointment  
(703) 435-9045

### PATTON HOUSE ANTIQUES

Specializing in Glass  
Heisey • Cambridge • Fostoria • Duncan

**Factory Antique Mall**

Verona, Virginia off I-81, Exit 227

**Antiquers Mall, Booth 81**

Route 29 North, Charlottesville, Virginia

The Daniel's, Box 547 Louisa, VA 23093 (540) 967-1181

# CANDY JARS AND BOXES



3350 Wabash  
6" Comport & Cover



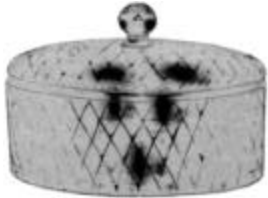
417 Tudor  
Oval Candy Box



1170 Pleat & Panel  
6" Comport & Cover,  
Low Footed



1170 Pleat & Panel  
5" Comport & Cover,  
High Footed



1184 Yeoman  
6" Candy Box & Cover,  
Deep, Diamond Optic



1184 Yeoman  
6" Candy Box & Cover,  
Also make 7" & 8"  
Same as 1183 Revere Boxes



1253 Twist  
3 Cornered Mint & Cover



1401 Empress  
6" Candy Box & Cover



1405 Ipswich  
¼ lb Candy Jar & Cover  
Also make ½ lb



1430 Aristocrat  
½ lb Candy Jar, Tall



1430 Aristocrat  
½ lb Candy Jar, Short



1469 Ridgeleigh  
6" Comport & Cover



1483 Stanhope  
6" Candy Box & Cover



1489 Puritan  
½ lb Candy Box & Cover



1489 Puritan  
1 lb Candy Box & Cover



1503 Crystolite  
7" Candy Box & Cover  
Also make 3 Compt.

H  
A  
N  
D  
M  
A  
D  
E  
  
G  
L  
A  
S  
S  
W  
A  
R  
E



# CANDY JARS AND BOXES



1503 Crystalite  
6" Candy Box & Cover,  
3 Footed



1503 Crystalite  
5 1/2" Shell Candy Box  
& Cover



1504 Regency  
7" Candy Box & Cover



7004 Wreath  
6" Candy Box & Cover



1506 Whirlpool/Provincial  
5 1/2" Candy Box  
& Cover, Footed



1519 Waverly  
6" Candy Box & Cover



1519 Waverly  
5" Chocolate Box  
& Cover



1519 Waverly  
6" Candy Box & Cover,  
Tall Footed



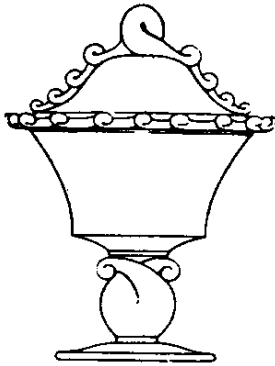
1521 Quilt  
7" Candy Box & Cover



5022 Graceful  
6" Low Footed Candy Box  
& Cover, Wide Optic



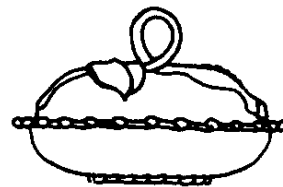
1540 Lariat  
Urn Jar & Cover,  
Tall Footed



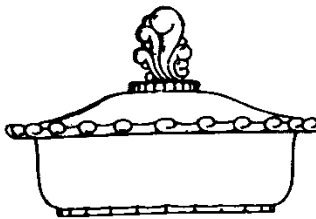
1540 Lariat  
Candy Box & Cover,  
Footed



1540 Lariat  
5" Candy Box & Cover



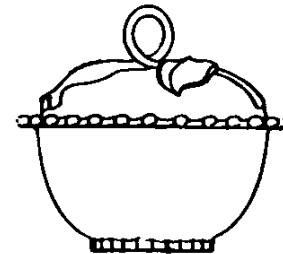
1540 Lariat  
7" Carmel Box & Cover



1540 Lariat  
8" Candy Box & Cover,  
Plume Finial



1540 Lariat  
8" Candy Box & Cover,  
Horse Head Finial



1540 Lariat  
7" Candy Box & Cover,  
Also make 2 Compt.



1541 Athena  
5 1/2" Candy Jar & Cover

H  
A  
N  
D  
M  
A  
D  
E  
  
G  
L  
A  
S  
S  
W  
A  
R  
E



# CANDY JARS AND BOXES



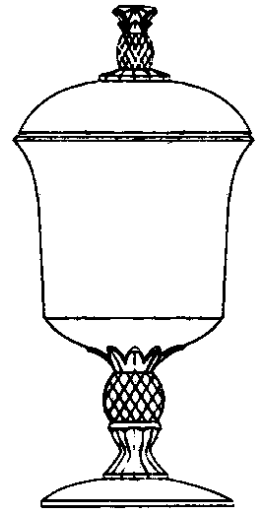
1541 Athena  
8" Urn & Cover



1567 Plantation  
Round Candy or  
Butter & Cover



1567 Plantation  
5" Comport & Cover,  
Deep, Short Footed



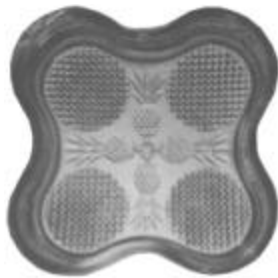
1567 Plantation  
5" Candy Jar & Cover,  
Tall Footed



1951 Cabochon  
6 1/2" Candy Box & Cover



1626 Satellite  
5" Candy Box & Cover



1567 Plantation  
7" Candy Box & Cover



1590 Zodiac  
Candy Jar & Cover



V960A Verlys Rose  
Candy Box & Cover

1632 Lodestar  
5" Candy Box & Cover

H  
A  
N  
D  
M  
A  
D  
E  
  
G  
L  
A  
S  
S  
W  
A  
R  
E



A. H. HEISEY & CO.,



NEWARK, OHIO